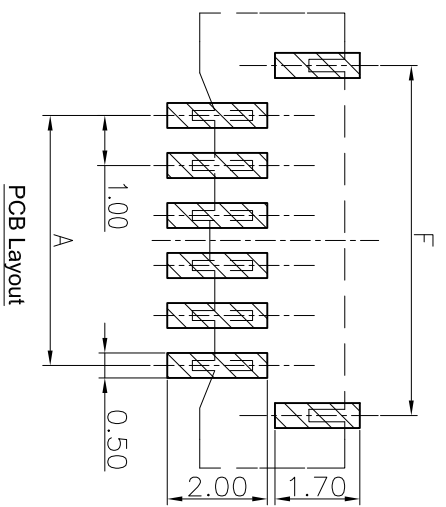
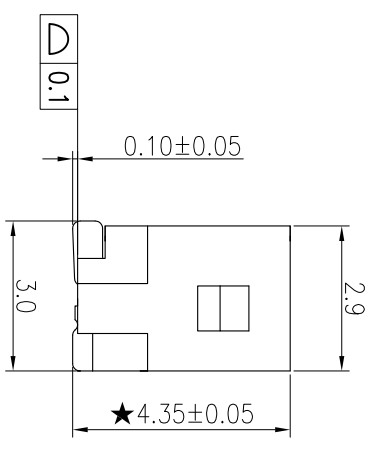
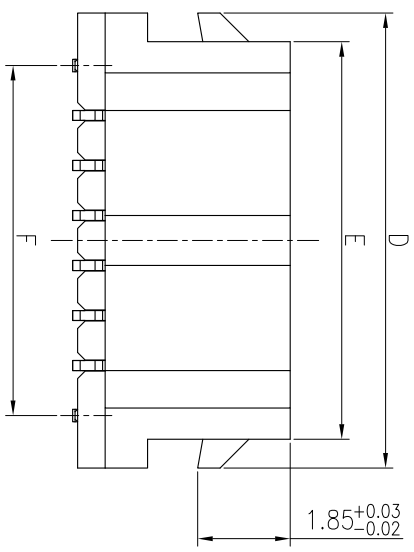
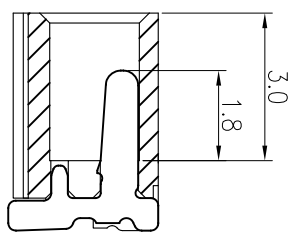
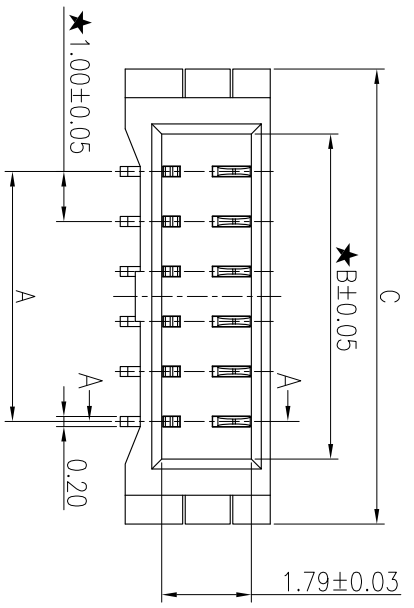


REV	ECN No.	DESCRIPTION	DATE
REV	ECNNO.	RELEASE	2013-10-29



No. of Connects	Dim A	Dim B	Dim C	Dim D	Dim E	Dim F
2	1.00	2.50	5.10	5.10	3.95	3.00
3	2.00	3.50	6.10	6.10	4.95	4.00
4	3.00	4.50	7.10	7.10	5.95	5.00
5	4.00	5.50	8.10	8.10	6.95	6.00
6	5.00	6.50	9.10	9.10	7.95	7.00
7	6.00	7.50	10.10	10.10	8.95	8.00
8	7.00	8.50	11.10	11.10	9.95	9.00
9	8.00	9.50	12.10	12.10	10.95	10.00
10	9.00	10.50	13.10	13.10	11.95	11.00
11	10.00	11.50	14.10	14.10	12.95	12.00
12	11.00	12.50	15.10	15.10	13.95	13.00
13	12.00	13.50	16.10	16.10	14.95	14.00
14	13.00	14.50	17.10	17.10	15.95	15.00
15	14.00	15.50	18.10	18.10	16.95	16.00
16	15.00	16.50	19.10	19.10	17.95	17.00

3	PAD	2 PCS	PHOSPHER BRONZE	NI:30U"-100U" Sn:80U"-200U"
2	CONTACT	12 PCS	PHOSPHER BRONZE	NI:30U"-100U" Sn:80U"-200U"
1	HOUSING COMPONENT	1 PCS	LCP	UL 94V-0, COLOR:AMBURE
ITEM	COMPONENT	Q'TY	MATERIAL	FINISH

深圳德全盛电子科技有限公司 SHENZHENDEQUANSHENG ELECTRONIC TECHNOLOGY CO.,LTD.		TITLE: TITLE BAR-CONNECTOR	
X:±0.5 X:±0.3 .XX±0.2 --	X:±0.5* X:±0.3* .XX±0.2* --	USE: CUSTOMER APPD: YAHVEH CHKD: GULLI DR: LUBING	PART NO.: 1.0T-3-12AB DWG NO.: DWG-NO:
	UNITS: mm	SCALE 1:1	SHEET FIT

备注:
 1. 电气性能:
 1-1. 额定电流: 0.5A
 1-2. 额定电压: 50V
 1-3. 耐压: 500V
 1-4. 接触电阻: 30mΩ
 1-5. 绝缘电阻: 500MΩ
 2. 工作温度: -25°C~+85°C
 3. 环境管控:
 3-1. 禁止使用含有SS-00259所限制的物质。
 3-2. 对应第三方测试机构出具的IOP-AES数据和不可测定物质的成分表, 在一年有效期内。