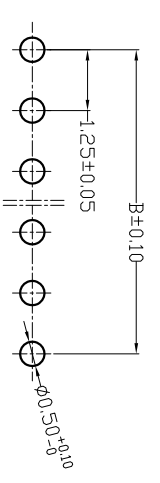
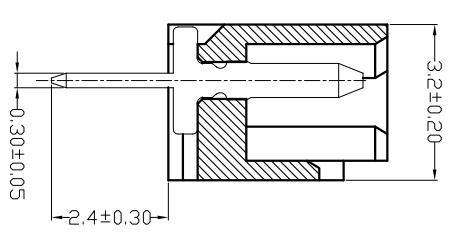
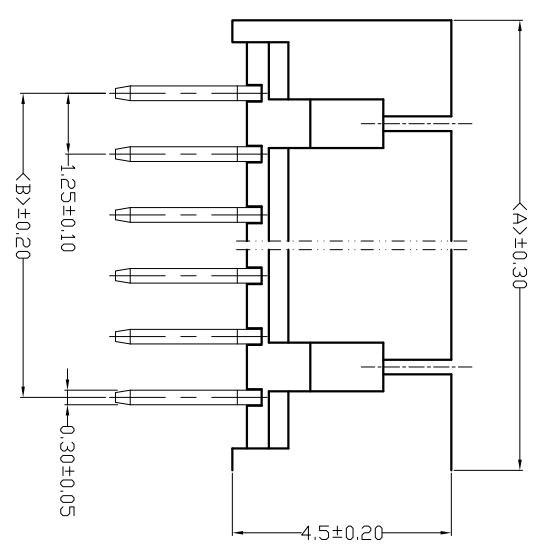
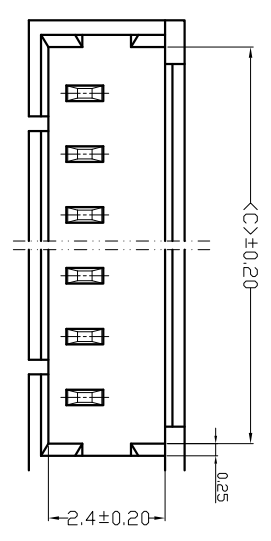


REV	ECN No.	DESCRIPTION	DATE
		RELEASE	2011-11-16



Pcb Layout

备注:  
 1. 电气性能:  
 1-1. 额定电流: 1.0A  
 1-2. 额定电压: 150V  
 1-3. 耐电压: 500V  
 1-4. 接触电阻: 30mΩ  
 1-5. 绝缘电阻: 500MΩ  
 2. 工作温度: -25℃~+85℃  
 3. 环境管控:  
 3-1. 禁止使用含有SS-00259所限制的物质。  
 3-2. 对应第三方测试机构出具的ICP-AES数据和不可测定物质的成分表, 在一年有效期内。

NO. of Contacts	DIM A	DIM B	DIM C
2	4.25	1.25	3.15
3	5.50	2.50	4.40
4	6.75	3.75	5.65
5	8.00	5.00	6.90
6	9.25	6.25	8.15
7	10.50	7.50	9.40
8	11.75	8.75	10.65
9	13.00	10.00	11.90
10	14.25	11.25	13.15
11	15.50	12.50	14.40
12	16.75	13.75	15.65
13	18.00	15.00	16.90
14	19.25	16.25	18.15
15	20.50	17.50	19.40

2	CONTACT	n PCS	COPPER ALLOY	Ni:30u"~100u", Sn:80u"~200u"
1	HOUSING	1 PCS	THERMOPLASTIC	UL 94V-0,COLOR:NATURE

ITEM	COMPONENT	QTY	MATERIAL	FINISH
深圳市德全盛电子科技有限公司 SHENZHEN CITY DEQUANGSHENG ELECTRONIC TECHNOLOGY CO.,LTD. TITLE: ASSEMBLY BAR-CONNECTOR PART NO.: 1.25T-1-NA DWG NO.:				
X.±0.5	X.±0.5'	USE:	CUSTOMER	
.X±0.3	.X±0.3'	APPD:	YAHVEH	
.XX±0.2	.XX±0.2'	CHKD:	YEWENUV	
--	--	DR:	CUIRONG	
UNITS:	mm	SCALE	1:1	
		SHEET	1/1	