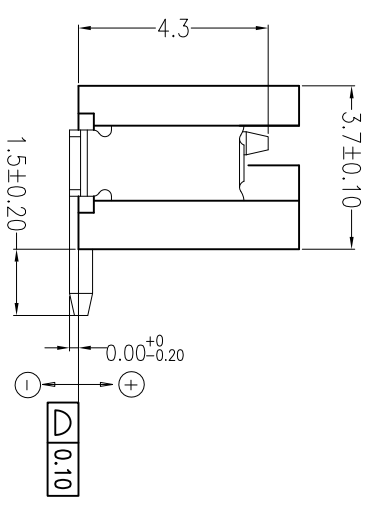
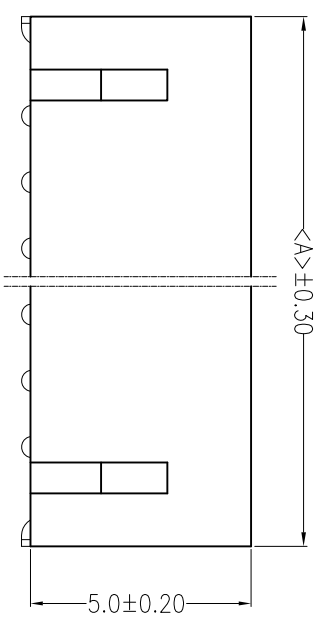
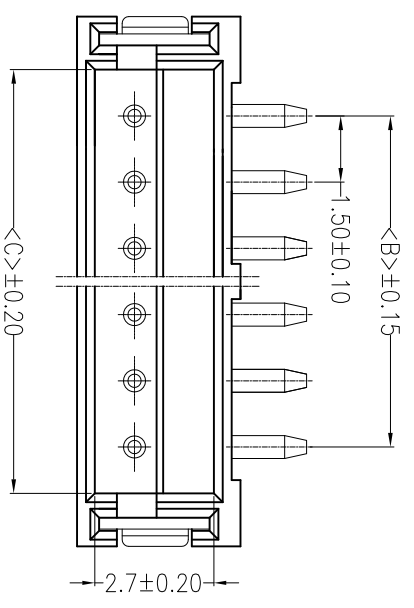
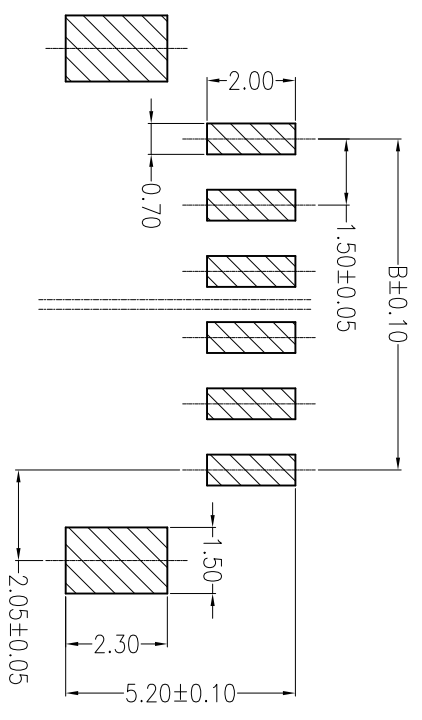


REV	ECR No.	DESCRIPTION	DATE
A			2011-9-13



NO. of Contacts	DIM A	DIM B	DIM C
2	6.00	1.50	3.60
3	7.50	3.00	5.10
4	9.00	4.50	6.60
5	10.50	6.00	8.10
6	12.00	7.50	9.60
7	13.50	9.00	11.10
8	15.00	10.50	12.60
9	16.50	12.00	14.10
10	18.00	13.50	15.60
11	19.50	15.00	17.10
12	21.00	16.50	18.60
13	22.50	18.00	20.10



PCB Layout

- 备注:
- 电气性能:
 - 1-1. 额定电流: 1.5A
 - 1-2. 额定电压: 150V
 - 1-3. 耐电压: 500V
 - 1-4. 接触电阻: 30mΩ
 - 1-5. 绝缘电阻: 500MΩ
 - 工作温度: -25°C~+85°C
 - 环境管控:
 - 3-1. 禁止使用含有SS-00259所限制的物质。
 - 3-2. 对应第三方检测机构出具的ICP-AES数据和不可测定物质的成分表, 在一年有效期内。

ITEM	COMPONENT	Q'TY	MATERIAL	FINISH
3	PAD	2 PCS	COPPER ALLOY	Ni:30u"-100u";Sn:80u"-200u"
2	CONTACT	n PCS	COPPER ALLOY	Ni:30u"-100u";Sn:80u"-200u"
1	HOUSING	1 PCS	THERMOPLASTIC	UL 94V-0, COLOR:MATURE

深圳市德全盛电子有限公司
DEQUANGSHENG ELECTRONIC TECHNOLOGY CO.,LTD.

X.±0.5	X.±0.5*	USE:	CUSTOMER	PART NO.:	1.5T-1-NAB
X.±0.3	X.±0.3*	APPD:	YAHVEH	DWG NO.:	
.XX±0.2	.XX±0.2*	CHKD:	YEWEMUJ	SCALE	1:1
--	--	DR:	KANG	SHEET	FIT
⊕	⊕	UNITS:	mm		