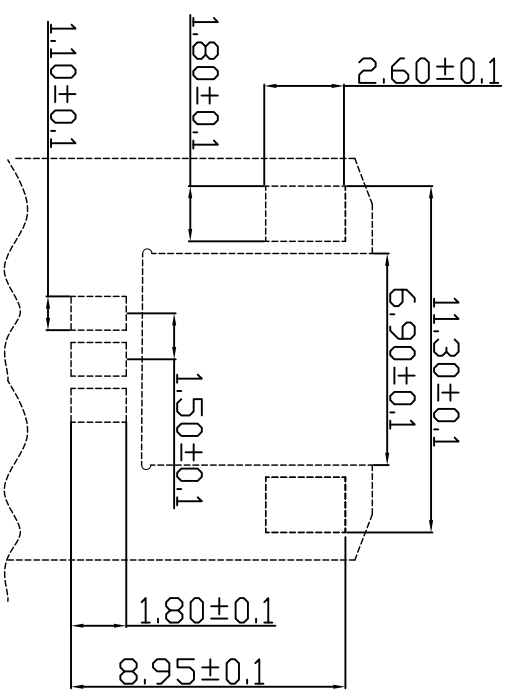
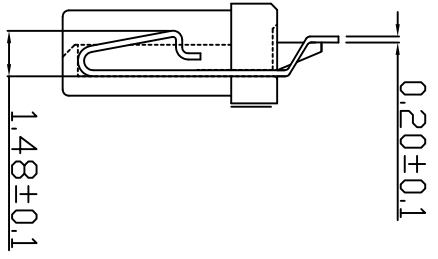
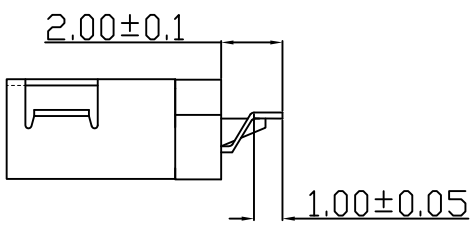
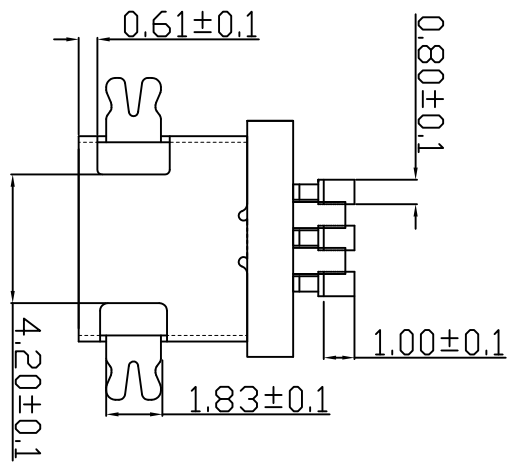
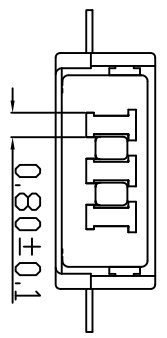
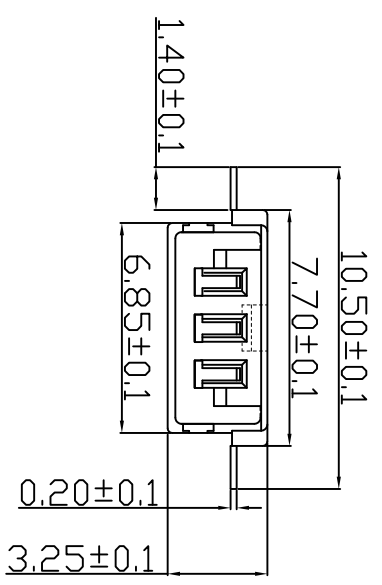


REV	ECR No.	DESCRIPTION	DATE
A	ECRNO.	RELEASE	2019-12-27

- 备注:
- 电气性能:
 - 1-1. 额定电流: 1.5A
 - 1-2. 额定电压: 150V
 - 1-3. 耐电压: 500V
 - 1-4. 接触电阻: 30mΩ
 - 1-5. 绝缘电阻: 500MΩ
 - 工作温度: -25°C~+85°C
 - 环境管控:
 - 3-1. 禁止使用含有SS-00259所限制的物质。
 - 3-2. 对应第三方检测机构出具的ICP-AES数据和不可测定物质的成分表, 在一年有效期内。



PCB LAYOUT



3	PAD	1 PCS	COPPER ALLOY	NI:300"-1000",Au:50 GOLD FLASH
2	CONTACT	3 PCS	COPPER ALLOY	NI:300"-1000",IN:80"-2000"
1	HOUSING COMPONENT	1 PCS	LCP	UL 94V-0, COLOR:MATURE

深圳市德全盛电子科技有限公司
DEQUANGSHENG ELECTRONIC TECHNOLOGY CO.,LTD.

X.±0.5	USE: CUSTOMER	PART NO.:	20018-3AWB
.X±0.3	APPD: YAHVEH	DWG NO.:	
.XX±0.2	CHKD: WENJUV	SCALE	1:1
--	DR: ZUO	SHEET	1/1
⊕	UNITS: mm		