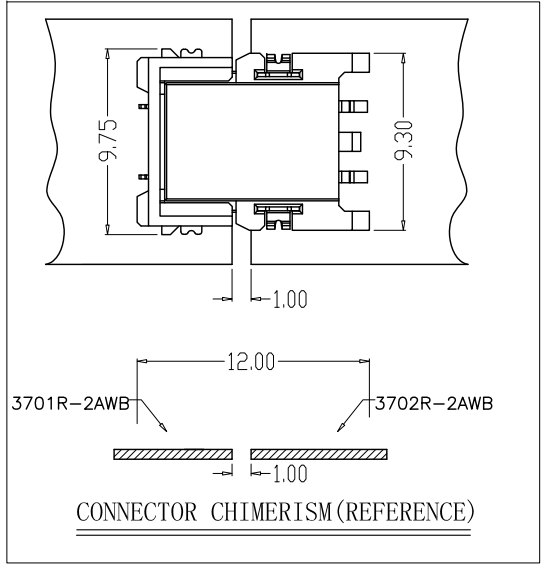
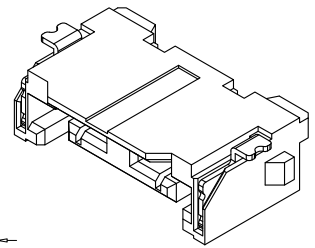
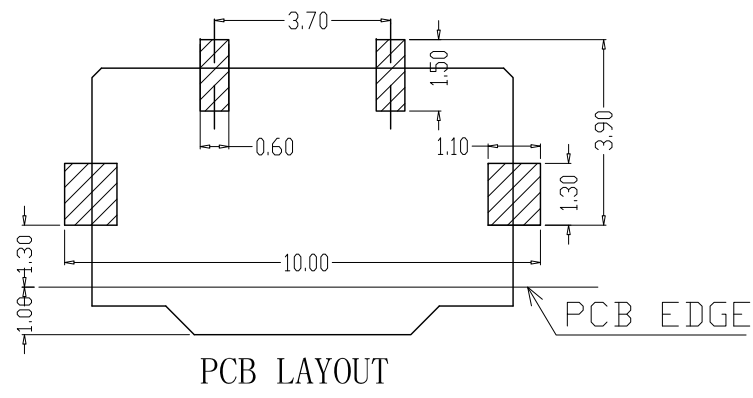
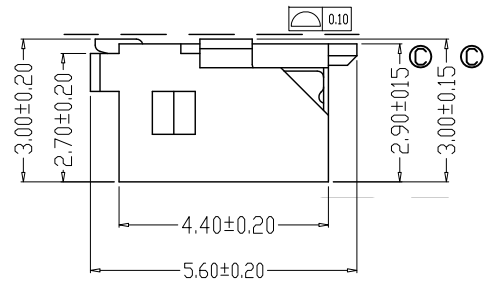
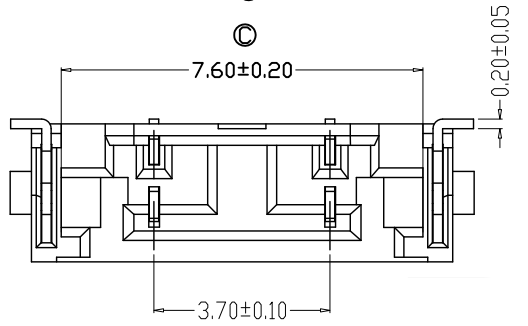
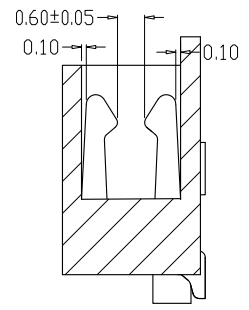
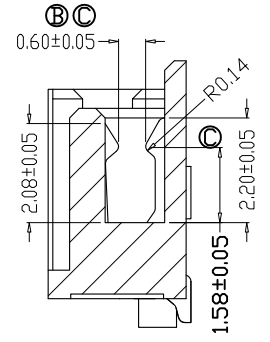
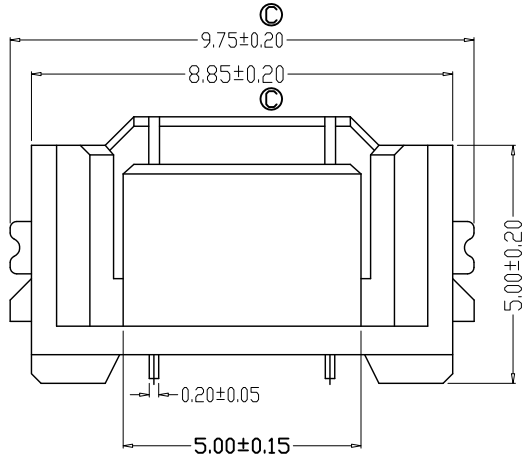


REV	DESCRIPTION	MARK	DATE
A	正式版本		2010/04/10
B	增加尺寸		2014/09/09
C	增加尺寸\□□□□□		2014/10/30



SPECIFICATIONS

- 1、Current Rating: 2A AC, DC
- 2、Voltage Rating: 500V AC, DC
- 3、Temperatuer Range: -40°C ~ +105°C
- 4、Contact Resistance: 40mΩ Max
- 5、Insulation Resistance: 1000MΩ Min
- 6、Withstanding Voltang: 1500V AC/minute
- 7、Material: Wafer LCP, UL94V-0
PIN Phosphoric bronze Tin-plated
Solder tad Phosphoric bronze Tin-plated



ITEM	COMPONENT	Q'TY	MATERIAL	FINISH
3	PAD	2 PCS	PHOSPHER BRONZE	Ni 30u"-100u", Sn 80u"-200u"
2	CONTACT	2 PCS	PHOSPHER BRONZE	Ni 30u"-100u", Sn 80u"-200u"
1	HOUSING	1 PCS	LCP	UL 94V-0, COLOR:NATURE

深圳市德全盛电子科技有限公司 SHENGZHENG CITY DEQUANGSHENG ELECTRONIC TECHNOLOGY CO.,LTD.				TITLE: ASSEMBLY FOR 3701/3702		
X. ± 0.30 X° ± MAT'L USE: CUSTOMER				PART NO: 3.7T-1-2AWB		
.X ± 0.20 .X° ± FINISH APPD yahveh				DWG NO.:		
.XX ± 0.15 .XX° ± CHKD yewenjv				SCALE SHEET REV. 1:1 1/1 A		
.XXX ± .XXX° ± UNITS: mm Q'TY DR: CUIRONG						